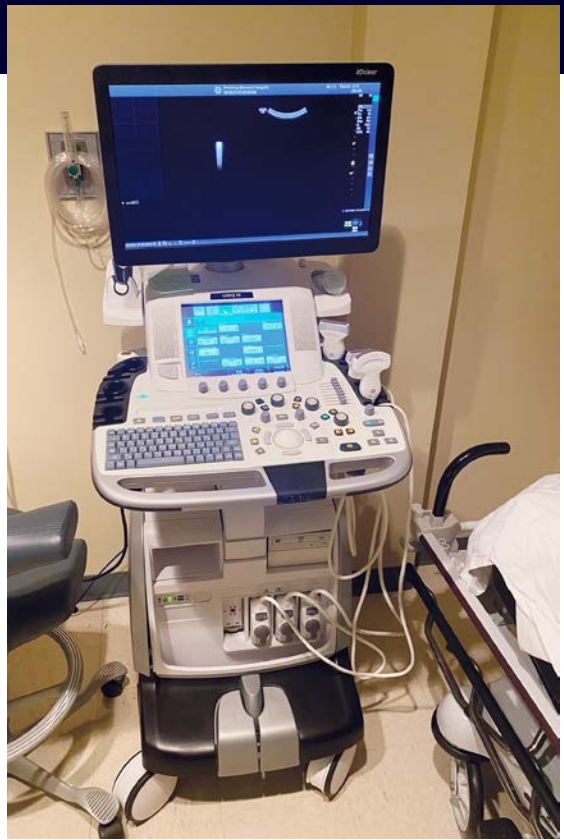


PERSHING
Health System



The LOGIQ E9 ULTRASOUND MACHINE was donated by the Boone Trustee's

The LOGIQ E9 has set the standard for transducer performance by designing them to work with the patient's body structure to maximize performance. The LOGIQ E9 was designed by GE with the help of doctors in order for this ultrasound to allow them to focus less on keystrokes and more on patient care.